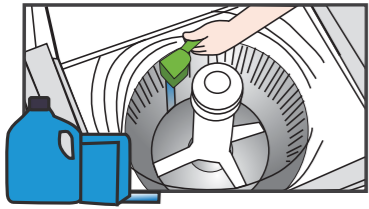


Operating Instructions

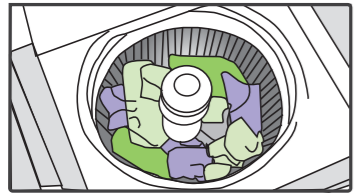
For our 24/7 service, please call our
toll free number: (866) 337-3433
or write us at: Customers@northendlaundry.com

WASHER



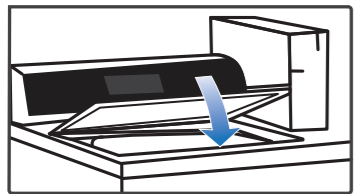
Insert High Efficiency Detergent

Use the recommended amount of detergent to avoid leaving soap residue on clothes. More detergent does **not** mean cleaner laundry.



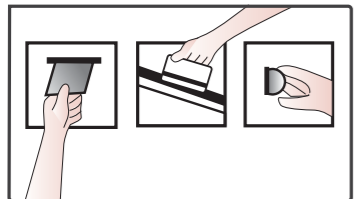
Load Laundry

Avoid overloading the washer. Remember, the more room the clothes have to move throughout the cycle, the cleaner they will become.



Close Door

Make sure lid is firmly closed.



Make Payment

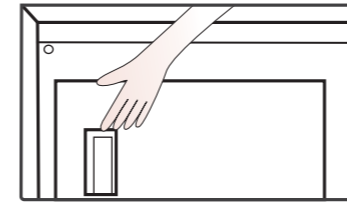
Follow the detailed instructions on the machine.



Press Start (Door Needs To Be Closed)

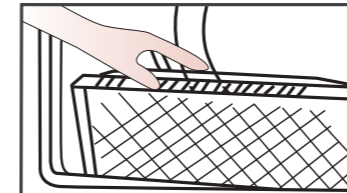
These high efficiency models examine the amount of water required to wash before they start running water. Your laundry is in good hands!

DRYER



Open Dryer Door

Make sure there are no foreign objects or items inside the dryer.



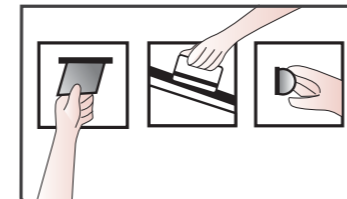
Remove Lint From Lint Tray

A clean lint tray allows for better air circulation and dries the laundry more efficiently.



Load Wet Laundry

Avoid overpacking the dryer to ensure the laundry is dried completely.



Make Payment

Follow the detailed instructions on the machine.



Press Start

These high efficiency models ensure your laundry is in good hands!